
NORTH BRANCH CAPITAL

Founded in 2014, North Branch Capital is a lower middle market private equity firm, based in Oak Brook, IL, with a long history of investing alongside and partnering with management teams in industrial businesses. We specifically target businesses that lead with engineering excellence or value-added services in order to solve complex customer problems. We seek partnerships with strong leadership teams driving tremendous cultures, and we are much more than a source of capital or liquidity. With 50 years of collective operating experience, our collaboration with management teams is unique. This experience comes from the Partners of North Branch, not a network of executives or consultants.

Investment Criteria

Revenue \$10 million to \$75 million

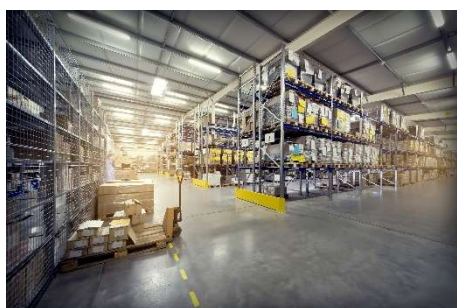
EBITDA \$2 million to \$8 million

Geography United States and Canada for platform investments. Globally for add-ons.

Transaction Type

- Typically partnering with family-owned, entrepreneurial run private companies
- Ownership transitions
- Corporate divestitures
- Add-on acquisitions
- Control positions

Industry Preferences



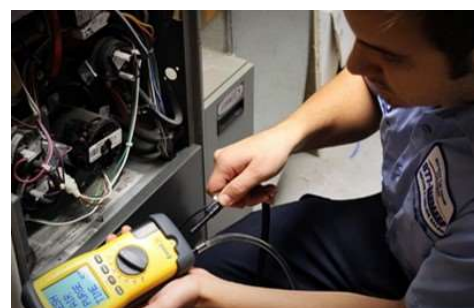
Value Added Distribution

Business to business with moderate average order size. Complementary services or engineering component.



Niche Manufacturing

Non-commodity, highly engineered products. Low capital expenditure requirements.



Industrial Services

Unique service offering generating consistent, repeatable revenue.

North Branch Capital, LLC

Drake Oak Brook Plaza: 2211 York Road, Suite 207, Oak Brook, IL 60523

Website: www.northbranchcap.com | Twitter Handle: @northbranchcap

Please contact TJ Gaul (TJ@northbranchcap.com) or Nick Johansson (Nick@northbranchcap.com) for new opportunities.

NORTH BRANCH CAPITAL

Investments



Investment Date: March 2015

Exit Date: November 2018

Location: Aliso Viejo, CA

www.motionsolutions.com

Motion Solutions is an engineering focused, value-added custom sub-assembly provider of linear motion and motion control solutions serving a variety of end markets including medical equipment, life sciences, technology, aerospace and defense and general industrial and automation.

Add-Ons Completed:



Hoffman
ISO 9001 Certified. Established 1959.



Investment Date: December 2015

Location: Maple Grove, MN

www.circuitcheck.com

Circuit Check is the leading manufacturer of test equipment used by electronics manufacturers to assess critical component quality, process, test and repair information.

Add-Ons Completed:



Investment Date: November 2017

Location: Macomb, MI

www.callrandazzo.com

Randazzo is a leading provider of non-discretionary, residential heating, ventilation and air conditioning (HVAC) replacement and maintenance services.

Add-Ons Completed:



Investment Date: May 2019

Location: Westlake, OH

www.fallprotect.com

Diversified Fall Protection is a designer and manufacturer of engineered fall protection systems for regulatory driven, mission critical safety applications and a value-added distributor of metal framings, fittings and hardware for safety and industrial applications.

Add-Ons Completed:



Investment Date: June 2015

Location: Boston, MA

www.alhi.com

Associated Luxury Hotels International (ALHI) is a Global Sales Organization, dedicated to the Meeting and Incentive (M&I) marketplace. ALHI connects the industry's leading meeting and event professionals to a curated collection of the world's most prestigious hotels, cruise ships, DMCs and travel partners through a global sales organization and event experiences.

Add-Ons Completed:



North Branch Capital Team



Jon Leiman



Bill Huber



Dan Bauman



TJ Gaul



Nick Johansson

North Branch Capital, LLC

Drake Oak Brook Plaza: 2211 York Road, Suite 207, Oak Brook, IL 60523

Website: www.northbranchcap.com | Twitter Handle: @northbranchcap

Please contact TJ Gaul (TJ@northbranchcap.com) or Nick Johansson (Nick@northbranchcap.com) for new opportunities.